

PHILIPS

Professional Display Solutions



D Series 24/7 Displays

Distributed by



Sales Enquiries 1800 00 77 80
connect@madisonav.com.au

D series - 24/7 Displays



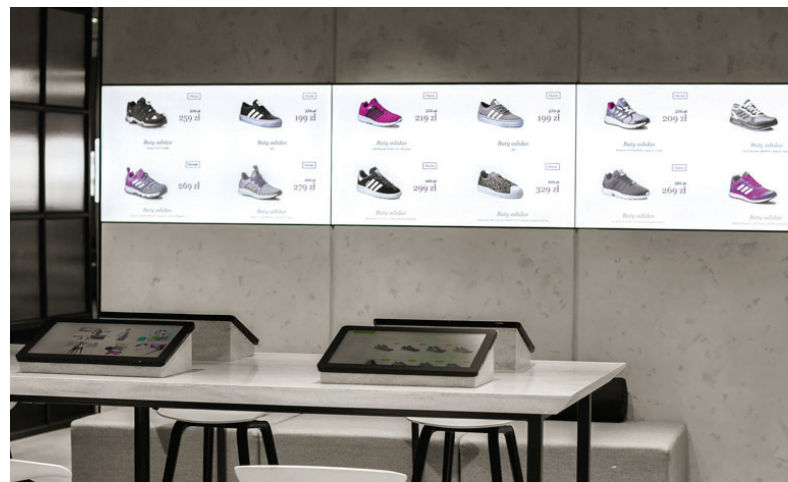
Impress with a large diameter display. Designed to run Android Apps, the Philips D-Line is the high-performance powerhouse for corporate, educational and similar environments that need to go bigger.



- ▮ 24/7 Operation System on Chip (16GB) + Stock Android OS
- ▮ 400 to 450 cd/m2 brightness
- ▮ 4K: 65" and larger, Full HD: 55" and smaller
- ▮ Universal IP/Serial control across the range
- ▮ All-In-One Signage Solution
- ▮ Available in landscape or portrait

Model numbers:

32BDL4050D	32 inch / 80 cm	1920 x 1080 p
43BDL4050D	43 inch / 108 cm	1920 x 1080p
49BDL4050D	49 inch / 126 cm	1920 x 1080p
55BDL4050D	55 inch / 139 cm	1920 x 1080p
65BDL4150D	65 inch / 164 cm	3840 x 2160 p
75BDL4150D	75 inch / 189 cm	3840 x 2160 p
86BDL4150D	86 inch / 217 cm	3840 x 2160 p
98BDL4150D	98 inch / 248 cm	3840 x 2160 p



Sales Enquiries 1800 00 77 80
connect@madisonav.com.au

D Series - 24/7 Displays

Specifications

Picture Display	32BDL4050D	43BDL4050D	49BDL4050D	55BDL4050D	65BDL4150D	75BDL4150D	86BDL4150D	98BDL4150D	
Diagonal Size	32 inch /80 cm	43 inch /108 cm	49 inch /126 cm	55 inch /139 cm	65 inch /164 cm	75 inch /189 cm	86 inch /217 cm	98 inch /248 cm	
Resolution	1920 x 1080p	1920 x 1080p	1920 x 1080p	1920 x 1080p	3840 x 2160p	3840 x 2160p	3840 x 2160p	3840 x 2160p	
Brightness	400 nit	450 nit	450 nit	450 nit	500 nit	500 nit	500 nit	500 nit	
Contrast Ratio	1100:1	1100:1	1100:1	1100:1	1100:1	1200:1	1200:1	1300:1	
Dynamic CR	500,000:1	500,000:1	500,000:1	500,000:1	500,000:1	500,000:1	500,000:1	500,000:1	
Response Time	10 ms	12 ms	12 ms	12 ms	8 ms	6 ms	12 ms	12 ms	
Android Version	Android 4.4.4	Android 4.4.4	Android 4.4.4	Android 4.4.4	Android 7	Android 7	Android 7	Android 7	
Connectivity									
Input	HDMI	2	2	2	2	3	3	3	3
	Other	Display Port, DVI, RJ45, RS232, micro SD, micro USB	Display Port, DVI, RJ45, RS232, micro SD, micro USB	Display Port, DVI, RJ45, RS232, micro SD, micro USB	Display Port, DVI, RJ45, RS232, micro SD, micro USB	Display Port, OPS, DVI, VGA, RJ45, RS232, micro USB (OTG)	Display Port, OPS, DVI, VGA, RJ45, RS232, mPCIe, micro SD, micro USB	Display Port, OPS, DVI, VGA, RJ45, RS232, mPCIe, micro SD, micro USB	Display Port, OPS, DVI, VGA, RJ45, RS232, mPCIe, micro SD, micro USB
	USB	2	2	2	2	1x 2.0, 1x 3.0	1x 2.0, 1x 3.0	1	1
	Wi-Fi	Yes	Yes	Yes	Yes	1	1	1	1
Output		1	1	1	1	1	1	1	
		2x 10W RMS	2x 10W RMS	2x 10W RMS	2x 10W RMS	2x 10W RMS	2x 10W RMS	2x 10W RMS	
Set Dimensions	724.8 (W) x 424.3 (H) x 56.4 (D) mm	965.0 (W) x 559.3 (H) x 45.5 (D) mm	1097.6 (W) x 633.9 (H) x 45.5 (D) mm	1231.9 (W) x 711.2 (H) x 45.72 (D) mm	1457.8 (W) x 835.6 (H) x 66.9 /70.5 (D) mm	1676.6 (W) x 955.0 (H) x 73.8 (D) mm	1927.9 (W) x 1098.9 (H) x 85.9 (D) mm	2193.2 (W) x 1248.2 (H) x 83.8 (D) mm	
Display Weight	6.0 kg	10.7 kg	14.7 kg	18.0 kg	36.5 kg	54.3 kg	68.3 kg	91.4 kg	
Bezel Width	15.7mm (B) 10.7mm (TLR)	15.7mm (B) 9.6mm (TLR)	15.7mm (B) 9.6mm (TLR)	15.6mm (B) 9.5mm (TLR)	11.7mm (T) 15.3mm (B) 12.2mm (LR)	12.5 (TLRB)	15.2 (TLRB)	16.0 (TLRB)	
Warranty	3 Years	3 Years	3 Years	3 Years	3 Years	3 Years	3 Years	3 Years	